

QualityNet [Log in to QualityNet Secure Portal \(formerly MyQualityNet\)](#)

[Log In](#)

Home My QualityNet Help

Hospitals - Inpatient Hospitals - Outpatient Physician Offices Ambulatory Surgical Centers PPS-Exempt Cancer Hospitals ESRD Facilities Inpatient Psychiatric Facilities Quality Improvement

QualityNet Registration

- Hospitals - Inpatient
- Hospitals - Outpatient
- Physician Offices
- ASCs
- Cancer Hospitals
- ESRD Facilities
- Inpatient Psychiatric Facilities
- QIOs

QualityNet News [More News >](#)

CMS releases April 2017 Hospital Compare preview reports

The Centers for Medicare & Medicaid Services (CMS) has released the April 2017 *Hospital Compare* preview reports available on *QualityNet* for participating Inpatient Quality Reporting (IQR), Outpatient Quality Reporting (OQR), and PPS-Exempt Cancer Hospital Quality Reporting (PCHQR) hospitals and facilities.

The *Hospital Compare* preview reports will be available from **January 9 through February 7**. Hospitals are encouraged to access and download reports early in the preview period in order to have time for a thorough review. The preview reports are only available during the preview

Log in to QualityNet Secure Portal

Login

- Download Symantec ID (**required for login**)
- Portal Resources

Log-on to Quality Net

CMS.gov | QualityNet
Centers for Medicare & Medicaid Services

Choose Your QualityNet Destination

Please select your primary quality program to reach the right log in screen for your QualityNet portal.

[Secure File Transfer](#)

[CMS Assessment Data Element Library](#)

Select your primary quality program:

- End-Stage Renal Disease Quality Reporting System
- Ambulatory Surgical Center Quality Reporting Program
- PPS-Exempt Cancer Hospital Quality Reporting Program
- Inpatient Hospital Quality Reporting Program
- Inpatient Psychiatric Facility Quality Reporting Program
- Outpatient Hospital Quality Reporting Program
- Physician Quality Reporting System
- Quality Improvement Organizations

Choose **Secure File Transfer**

Log In to QualityNet *Required Field

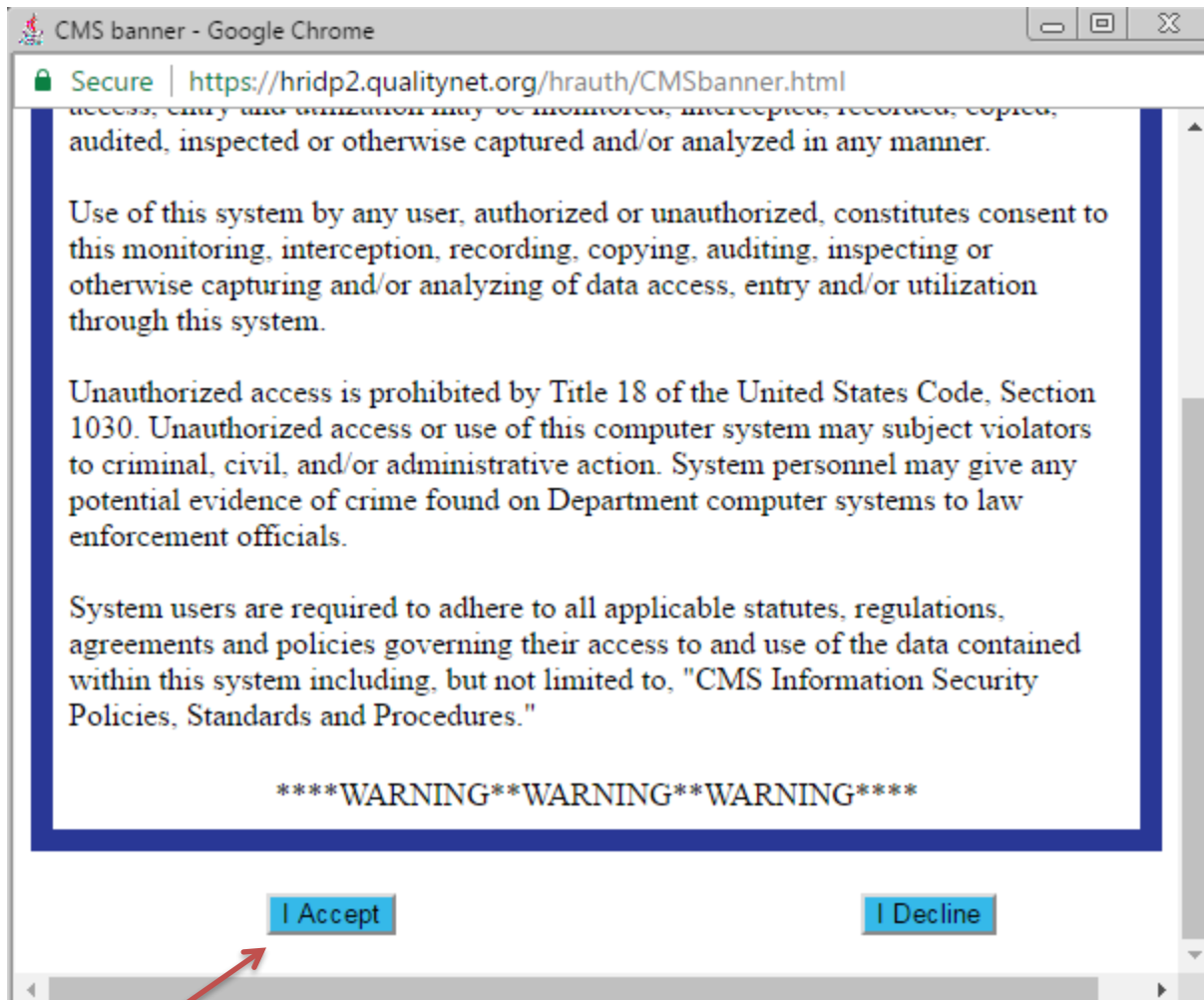
Please enter your CMS User ID and password, followed by your Symantec VIP Security Code, then click Submit.

* User ID

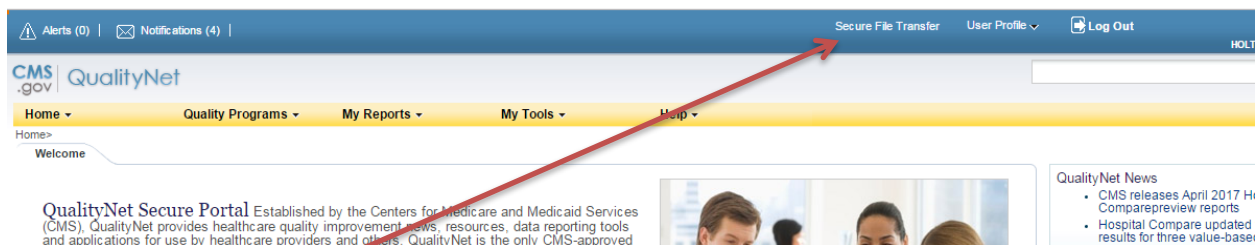
* Password

* Security Code

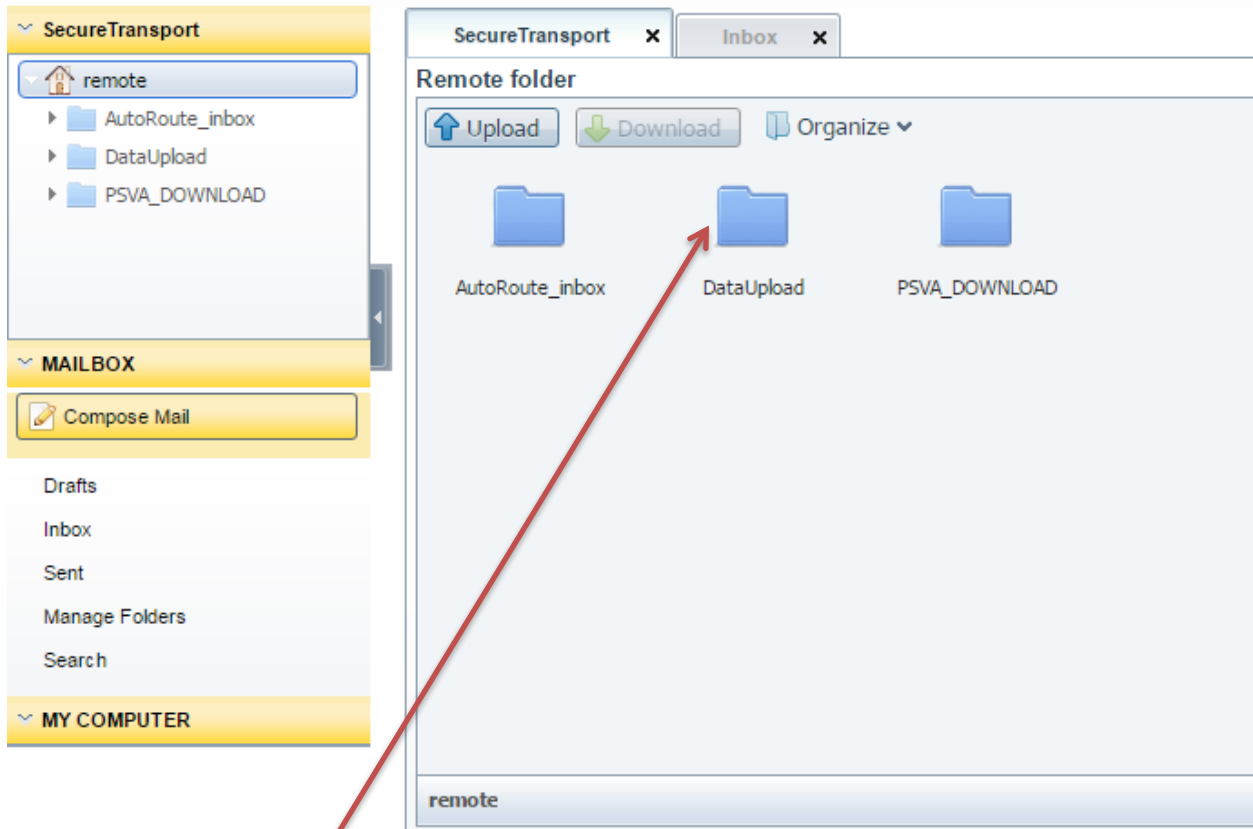
Complete all 3 fields for log-in requirements and select **submit**



Select **I Accept**



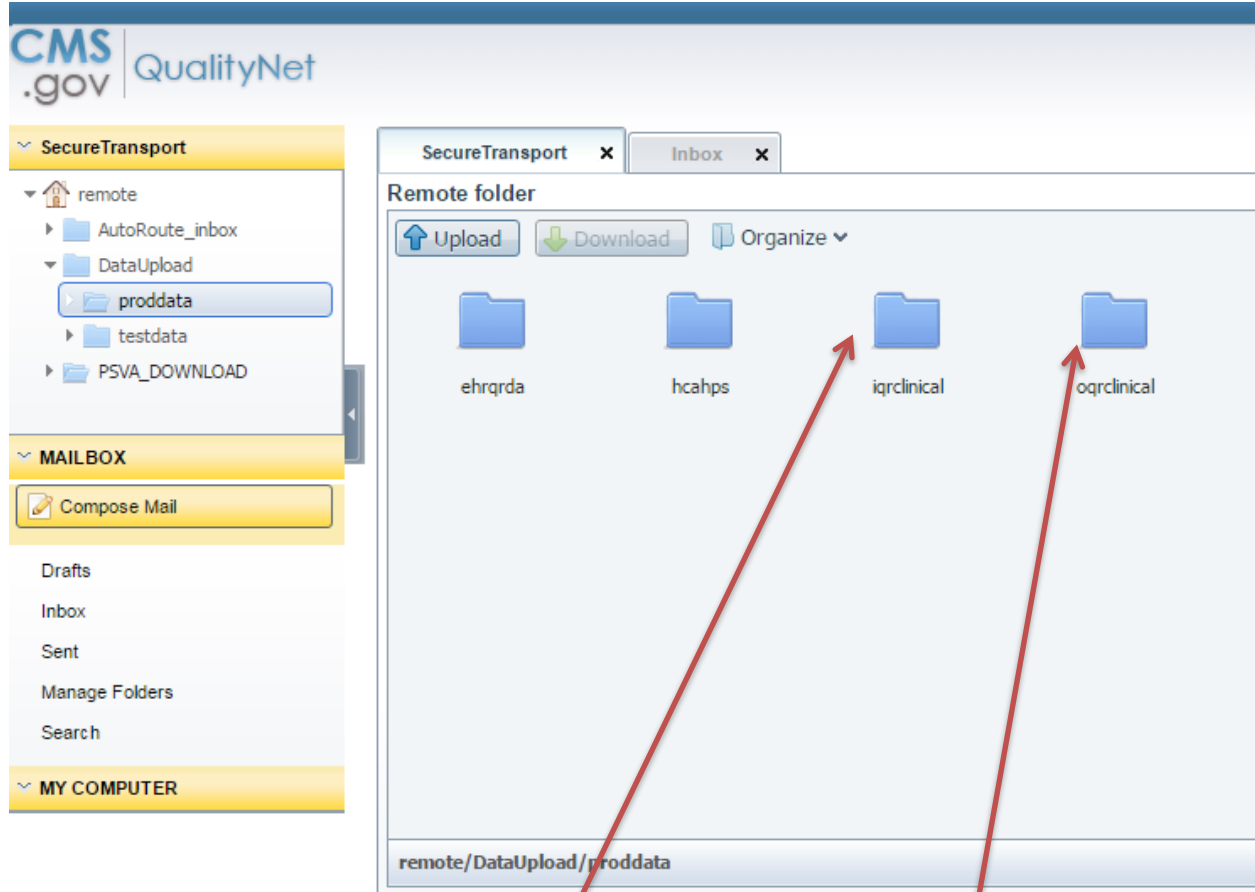
Click on **Secure File Transfer**



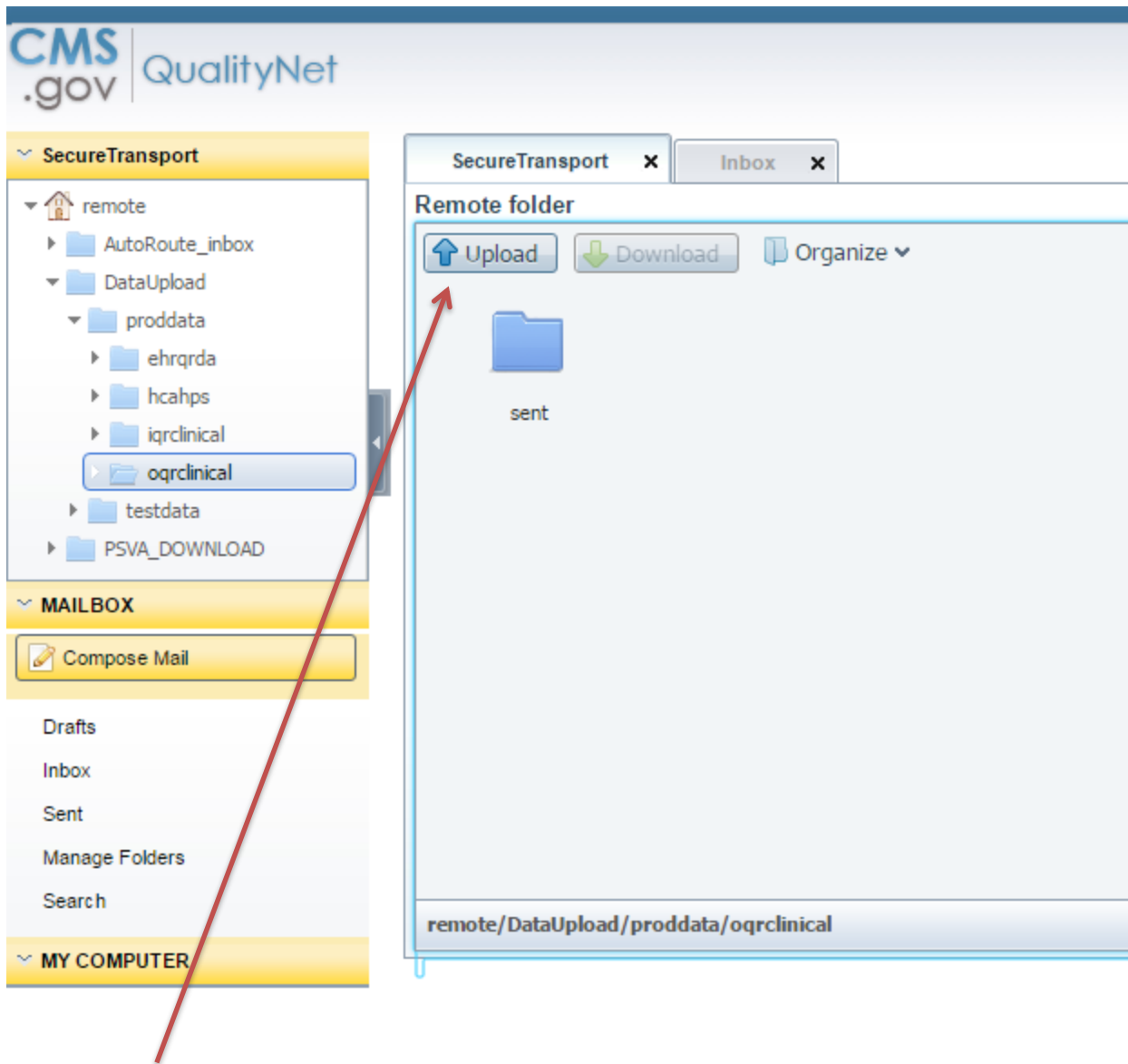
Double click the **Data Upload** file folder

The screenshot displays the CMS QualityNet interface. On the left, a navigation pane shows the 'SecureTransport' section expanded to 'remote', with 'DataUpload' selected. Below this are 'MAILBOX' and 'MY COMPUTER' sections. The main window shows a 'Remote folder' view with 'Upload', 'Download', and 'Organize' buttons. Two folders, 'proddata' and 'testdata', are visible. A red arrow points from the 'proddata' folder to the text below. The address bar at the bottom of the main window shows 'remote/DataUpload'.

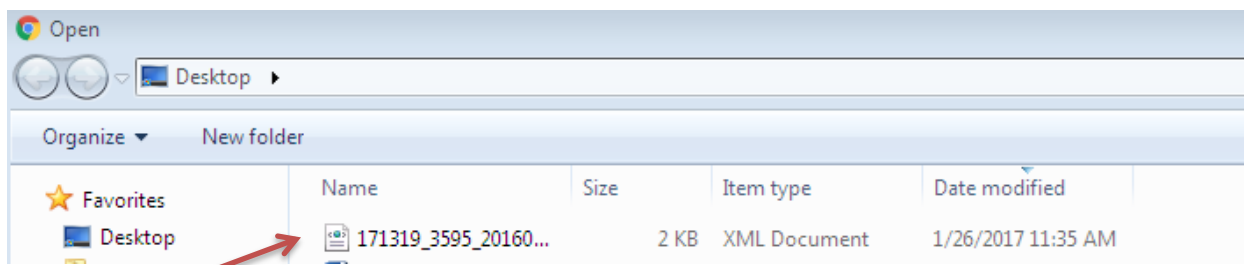
Double click the **Proddata** file folder



Double click the appropriate file folder: **iqclinical** (for IP measures) or **oqclinical** (for OP measures)



Click the **upload** tab



Select file(s) from saved folder/area on local PC (utilize highlight and shift to select multiple files). Click open to copy files.

11:46 AM
✉ qnetsupport@sdps.org 11:46 AM
OQR Clinical Warehouse files have been processed

Receipt of upload data via Confirmation Email from Quality Net